



<http://www.ruslink.info>

Инструкция по настройке DVB-карта Tevii S400 и Tevii S600.

Установка драйверов и программного обеспечения.

CD

CD\DVD

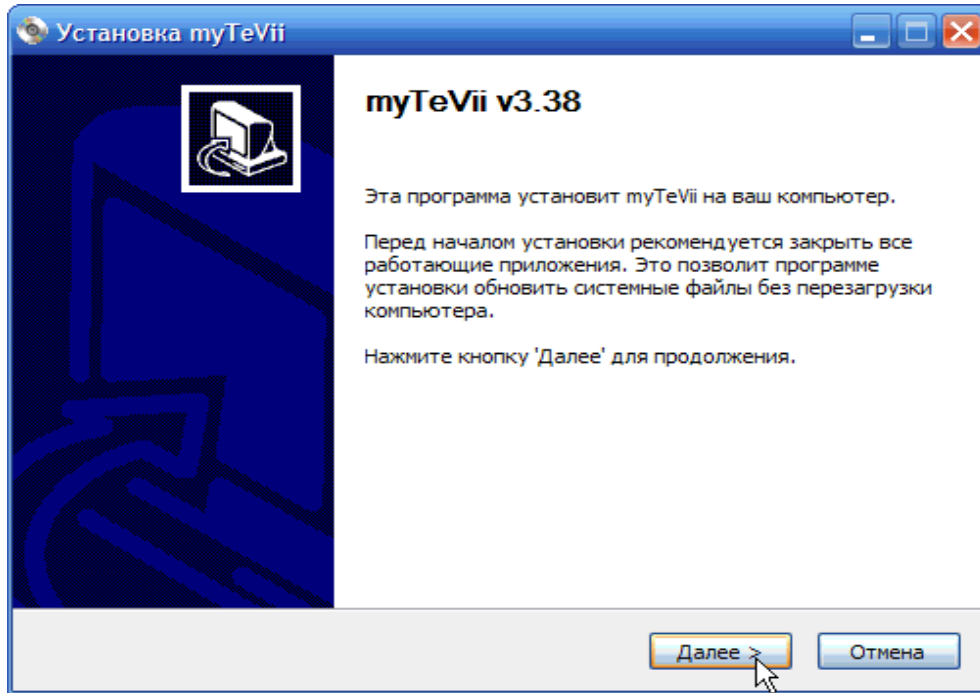
TV

1.

“Install myTeVii & Drivers.

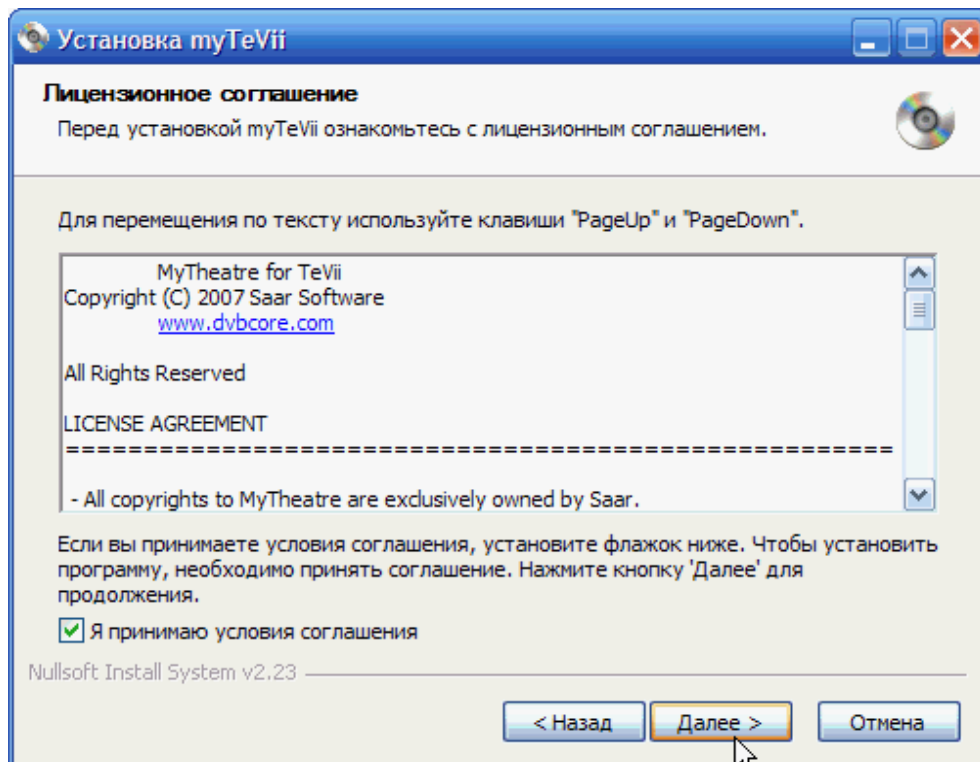


“ ”



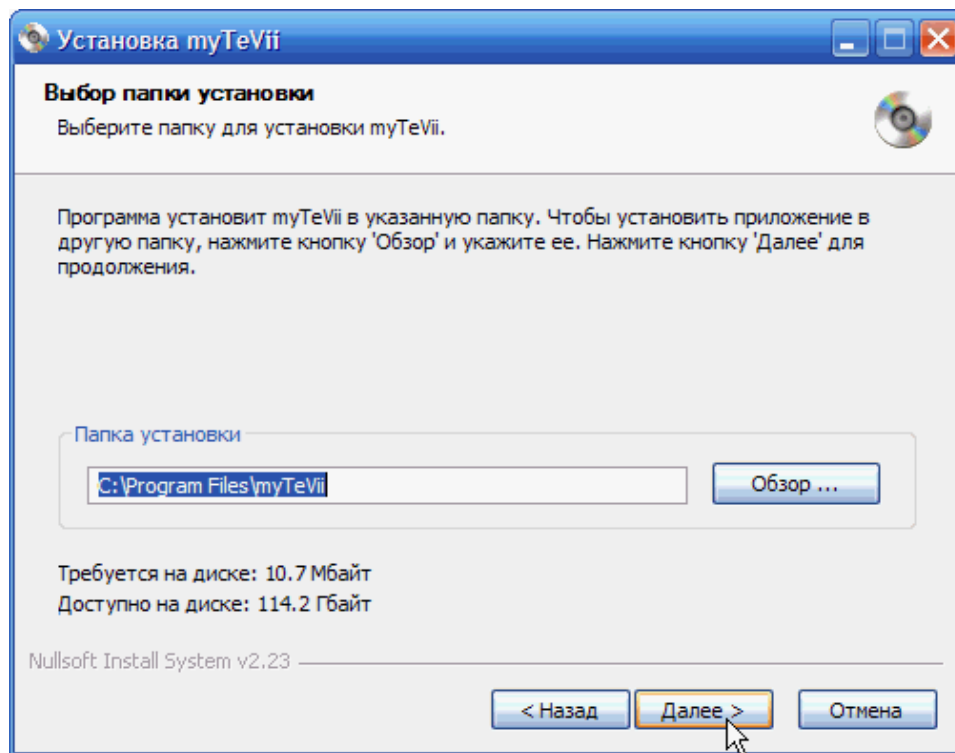
2.

“ ” “ ”



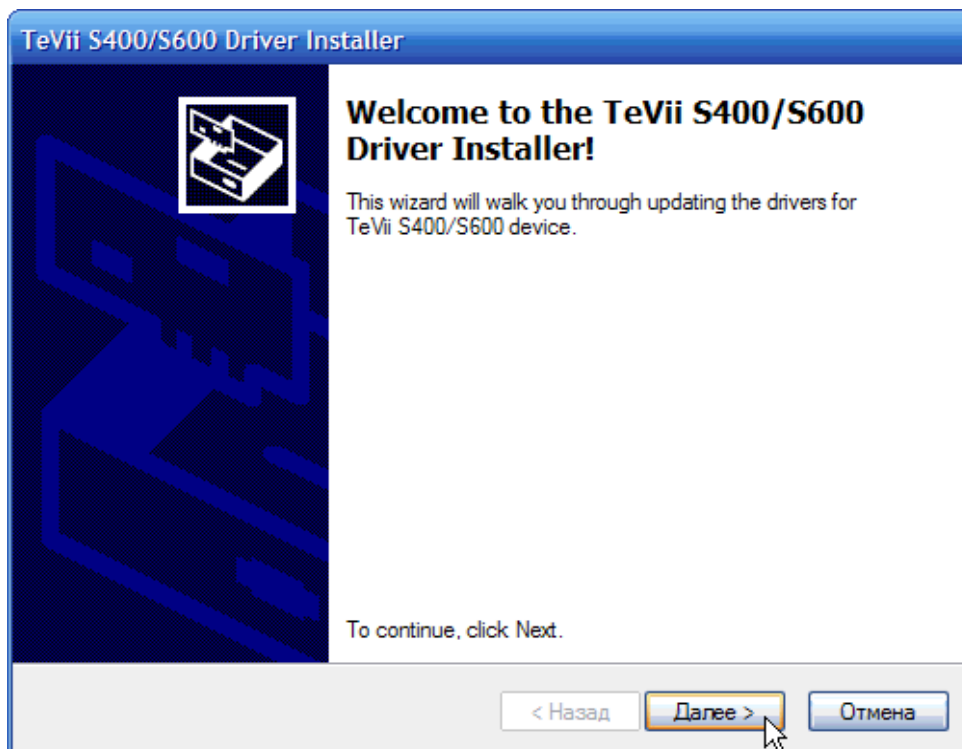
myTeVii

“ ”



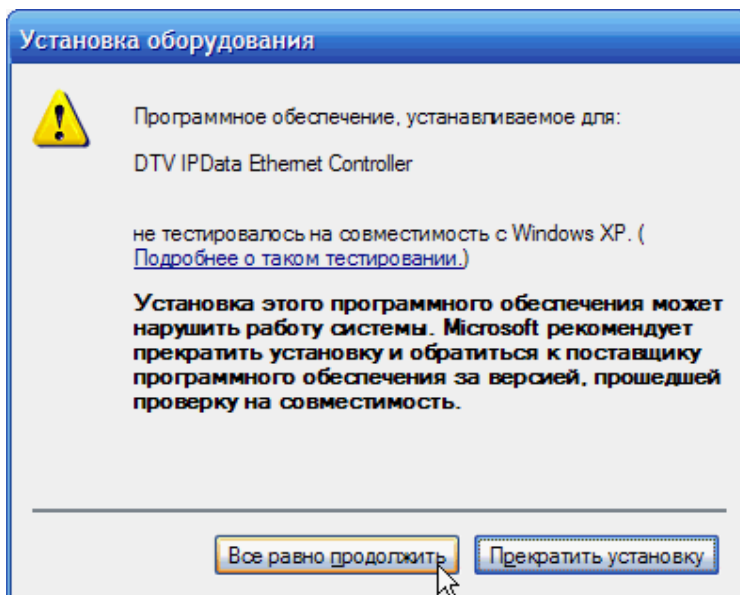
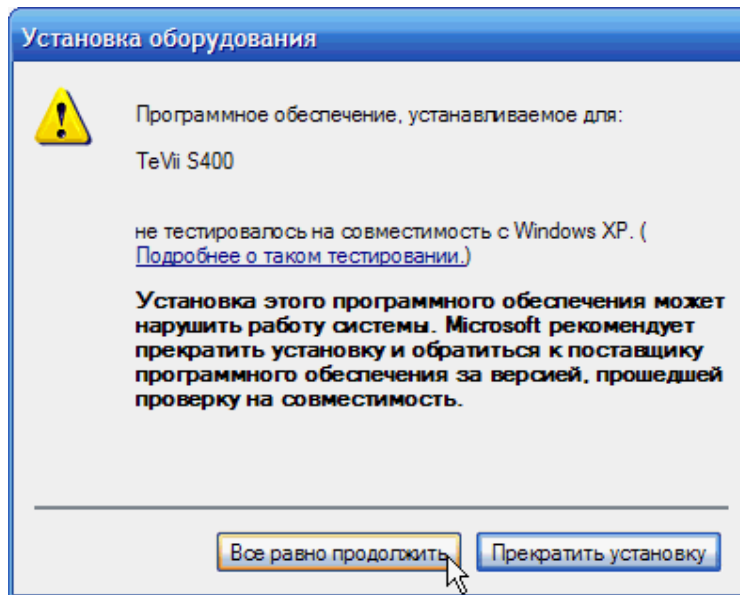
3.

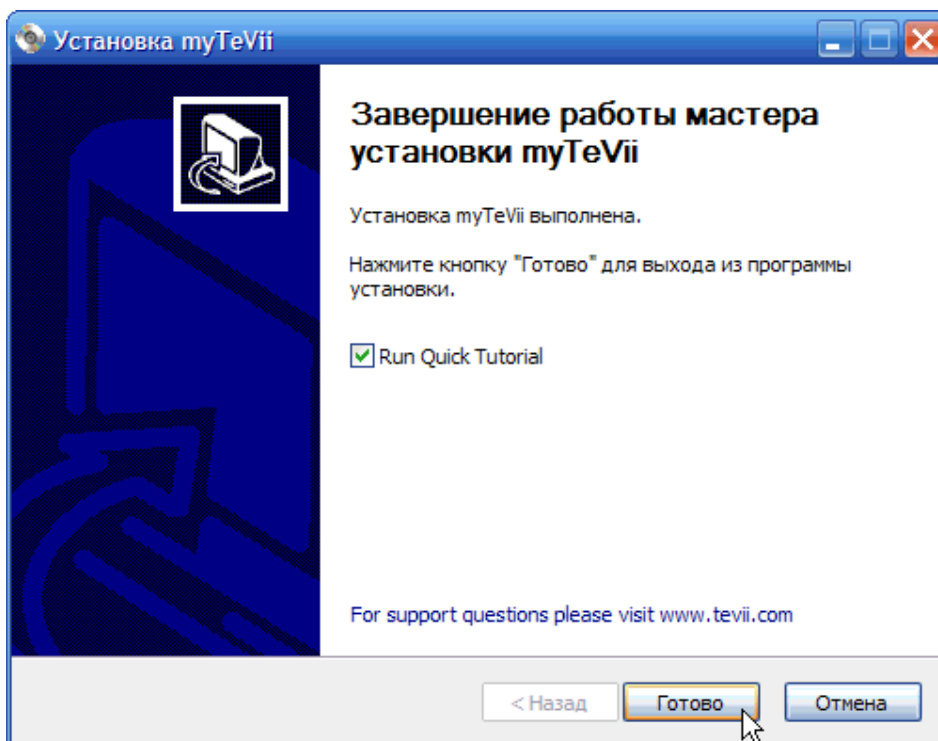
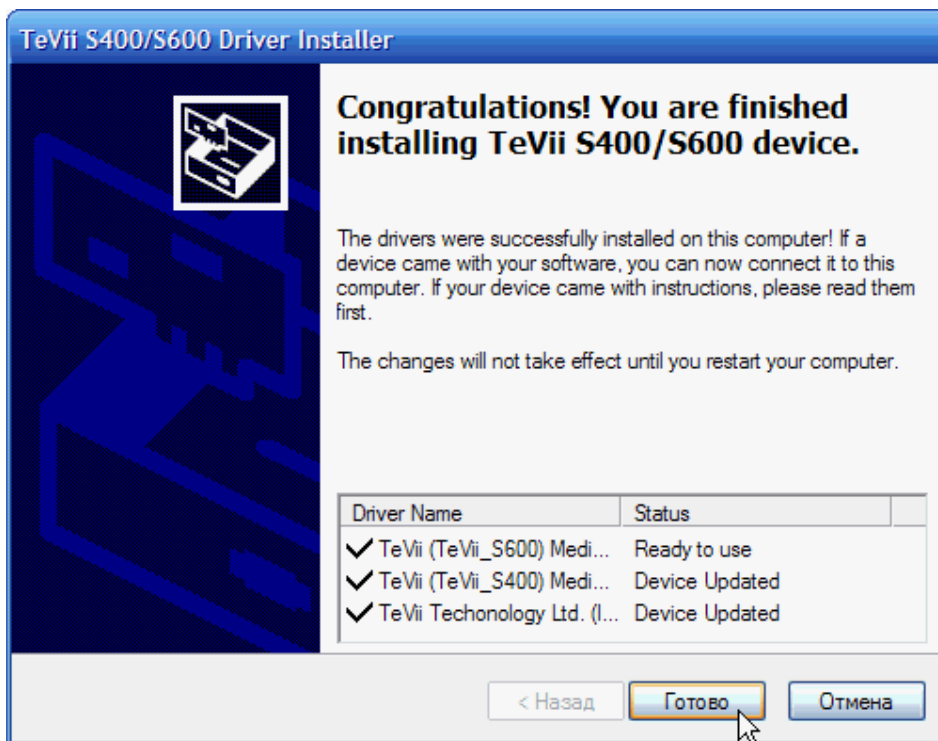
“ ”



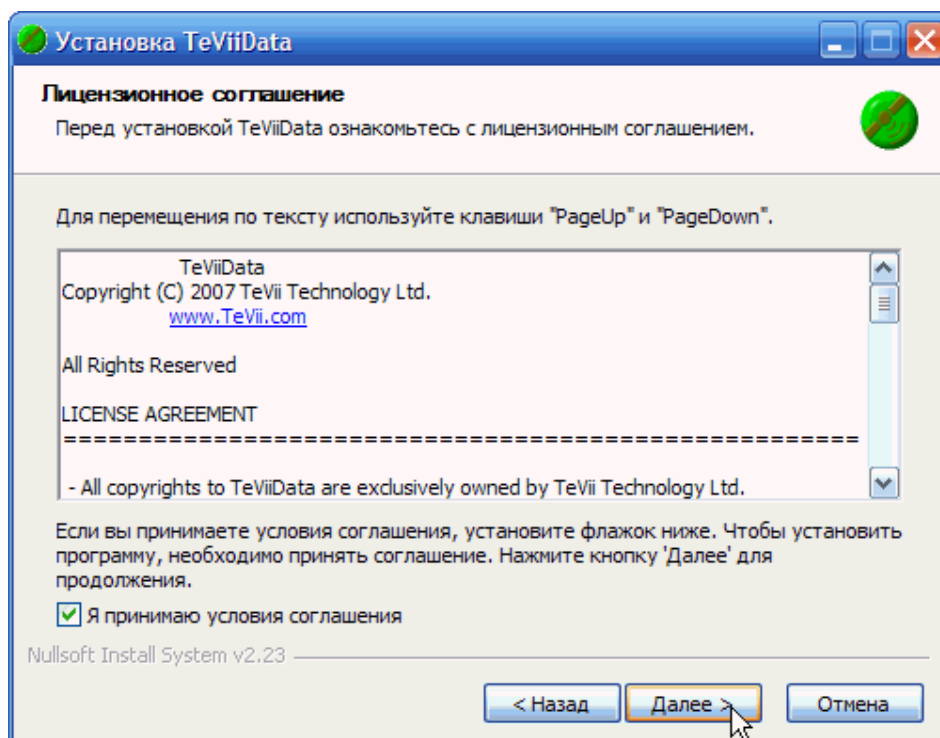
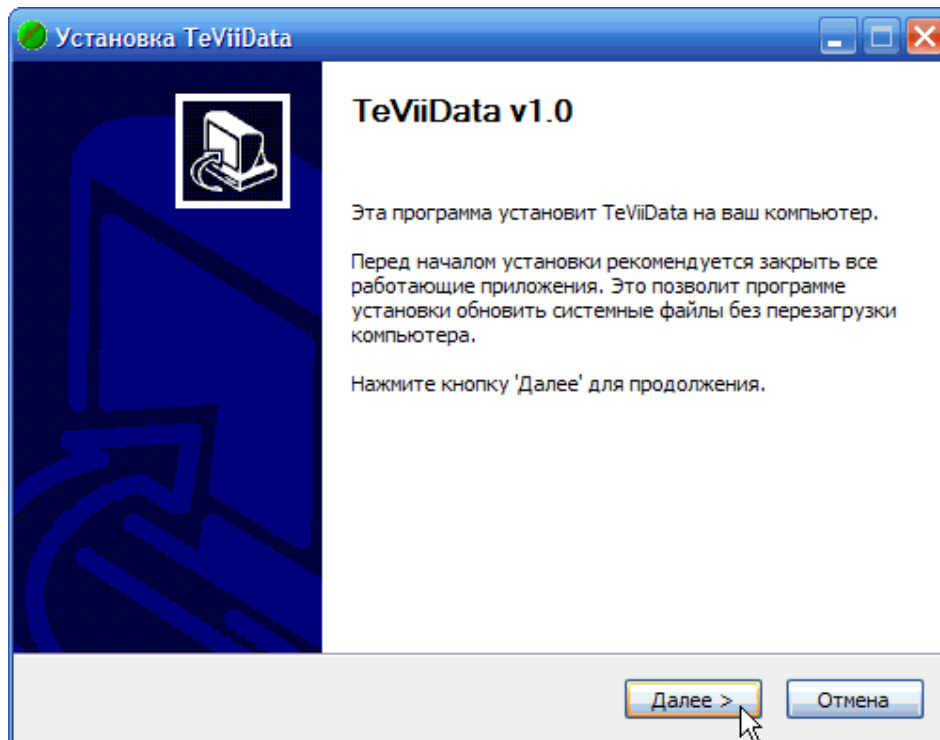
Windows.

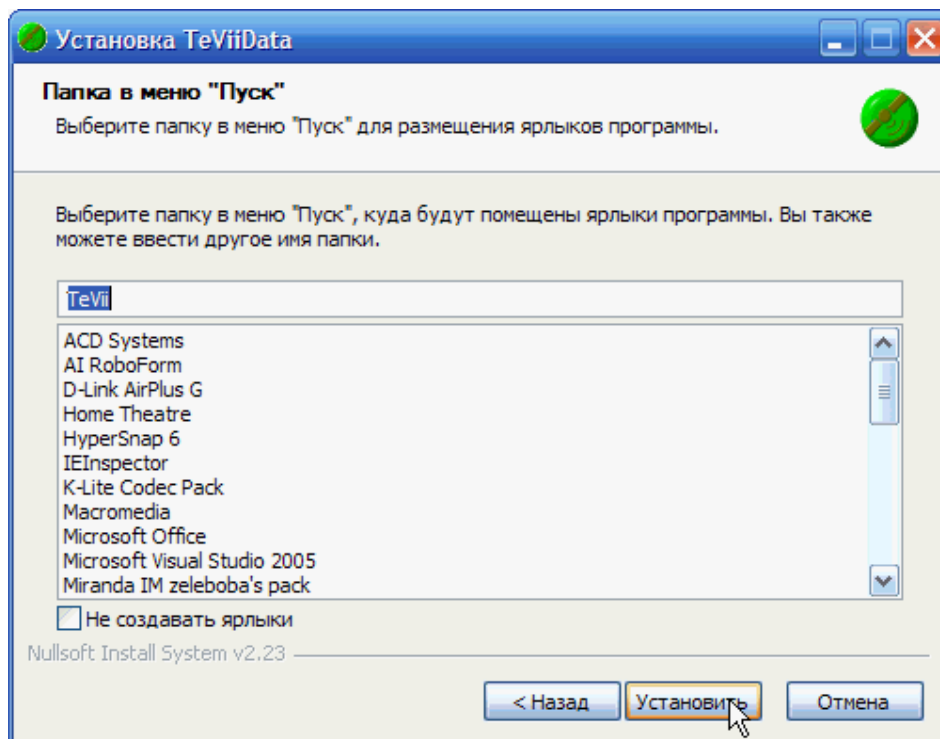
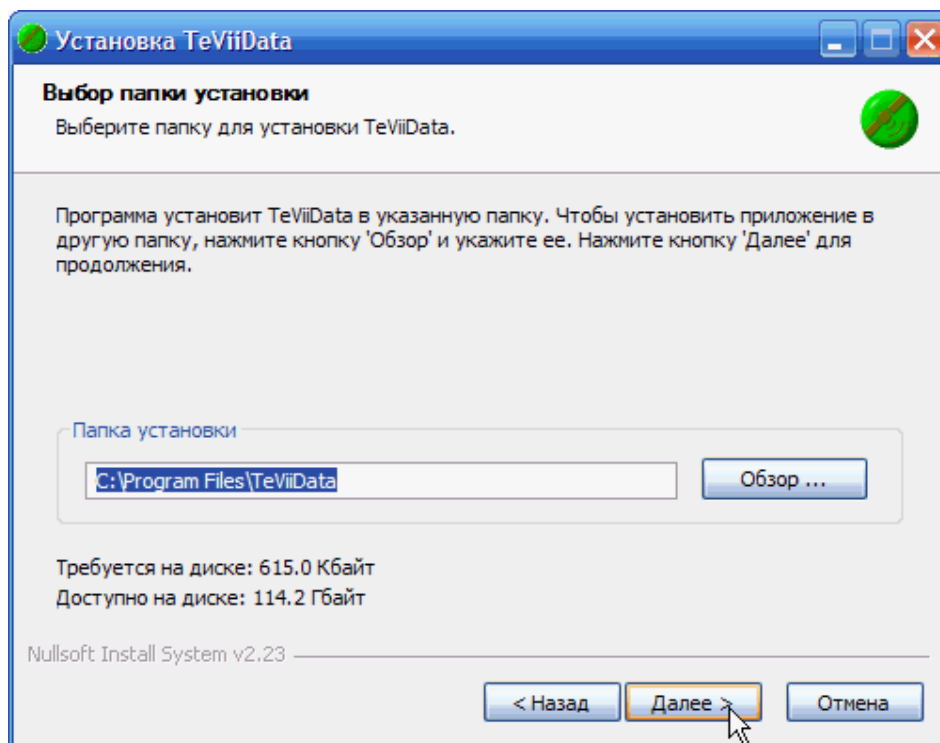
" .

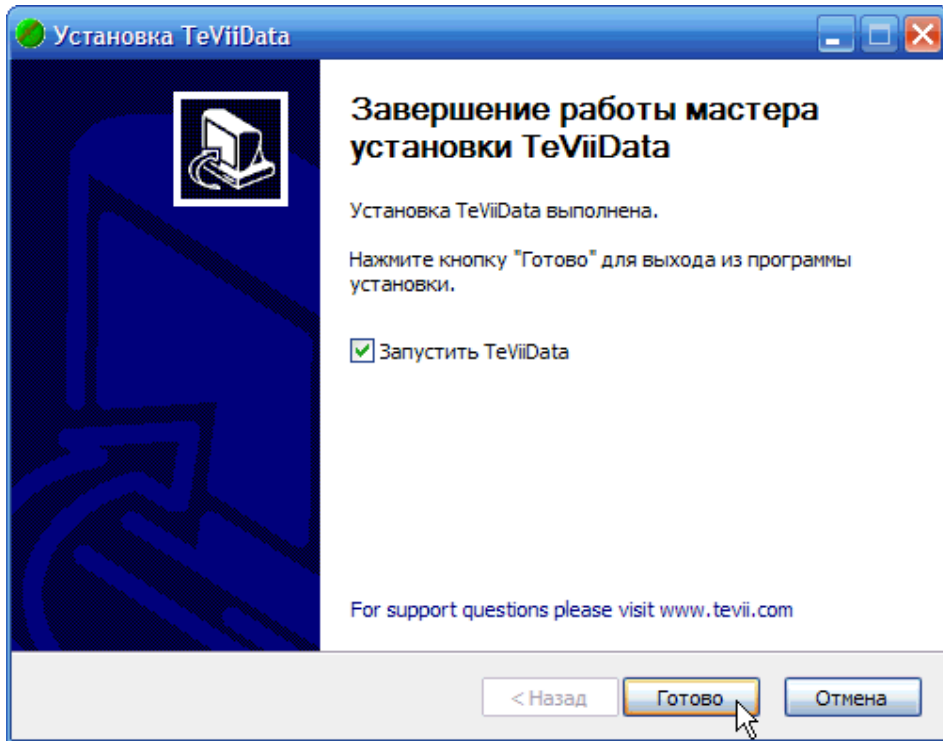




Настройка программного обеспечения TeViiData для работы в Интернет.







Настройка программы TeViiData для работы с провайдером skyDSL (Спутник Express AM22).

TeViiData (- TeViiData).

“ Add”.

Transponder Setting

<http://www.ruslink.info/support/parameters.html>

Sesat 2 (Express AM22).

PID 108). 100 (PID's 100

!

KHz ().

LOFHigh 10600000

LOFLow 9750000

LOFSwitch 11700000

Transponder Setting

Section	Parameter	Value	Unit
Transponder	Frequency	11481000	KHz
	SymbolRate	41250	Ksps
	H/V	H	
	LOFHigh	10600000	KHz
	LOFLow	9750000	KHz
	LOFSwitch	11700000	KHz
	DiSEqC	A	
	Tone/Databurst	None	
	22K	None	
DVBS-2	FECRate	None	
	ModulationType	Normal	
	Inversion	None	
	Pilot	Off	
	RollOff	0.2	

Save Cancel

Save.

“Lock”

DVB

skyDSL.

The screenshot shows the TeViiData software interface. It features a blue title bar with the text "TeViiData" and standard window control buttons. The main content is divided into several sections:

- Information:** Contains a "PID Filter List" table with columns for PID, Type, and MAC Address. The first row is highlighted with a green dot and contains the values: PID 100, Type MPE ..., and MAC Address 01-00-5E-30-D8-65. Below the table are "Add" and "Delete" buttons.
- Statistic:** A box showing "Total: 5.76 Mbytes" and "Speed: 634.89 kbps".
- MAC Address:** A text box containing the value "00-18-BD-5A-DE-BB".
- Channel List:** A table with columns: Frequency, Symbolrate, HV, LOFHigh, LOFLow, LOFSwitch, DiSE. The first row contains: 11481000, 41250, H, 10600000, 9750000, 11700000, 0. To the right of the table are buttons for "Lock", "Add", "Edit", "Delete", and "Dish".
- Signal Indicators:** A green satellite dish icon is next to two progress bars. The "Strength" bar is at 60% and the "Quality" bar is at 70%.
- OK:** A large button at the bottom center of the window.

skyDSL 8.x

skyDSL

,

,

:

skyDSL

(
").

- "

1.

2.

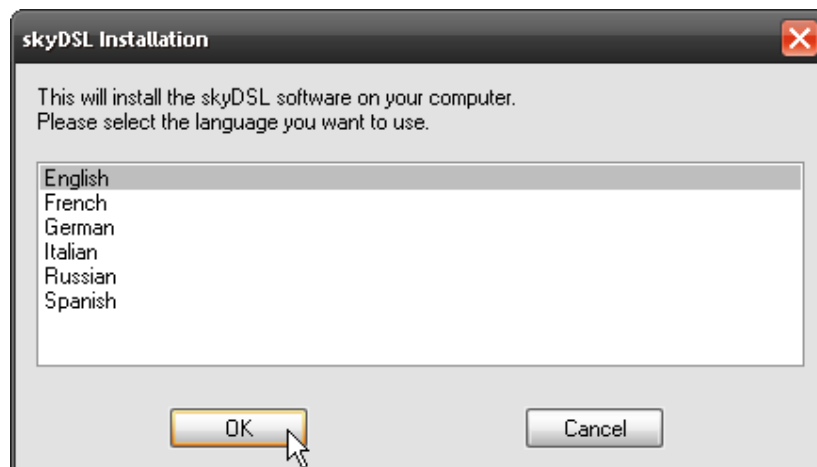
skyDSL (. [skyDSL](#))

3.

4.

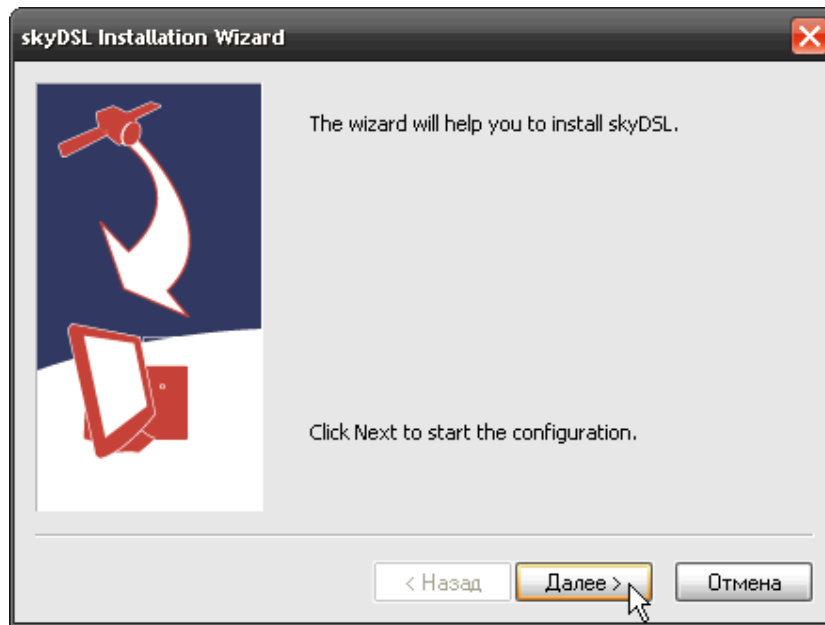
setup.exe

5.



6.

(" ")

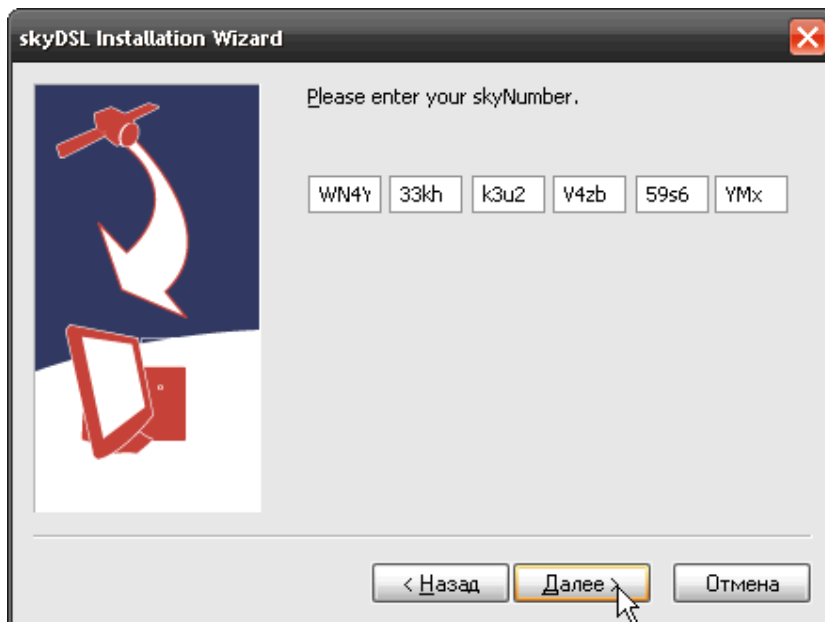


7.

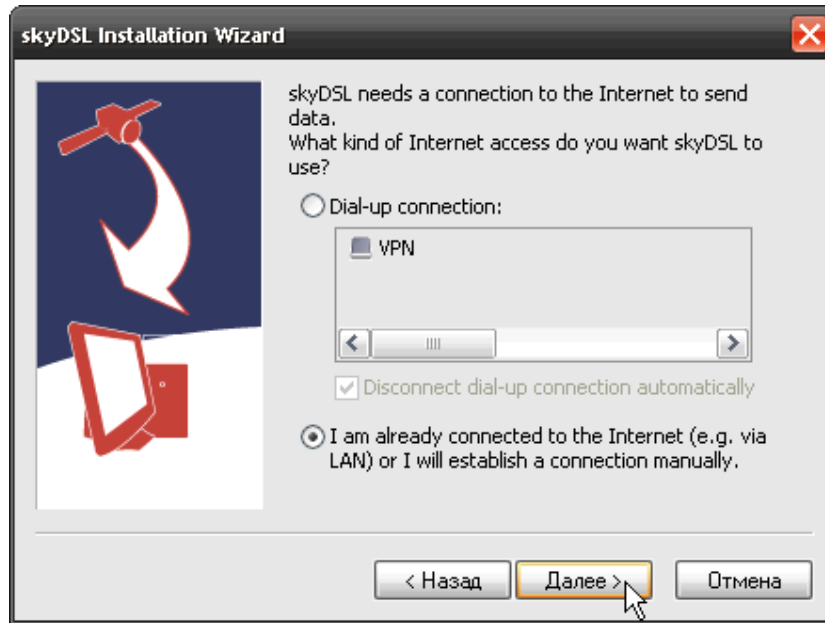
24-
RusLink

skyDSL (skyNumber),

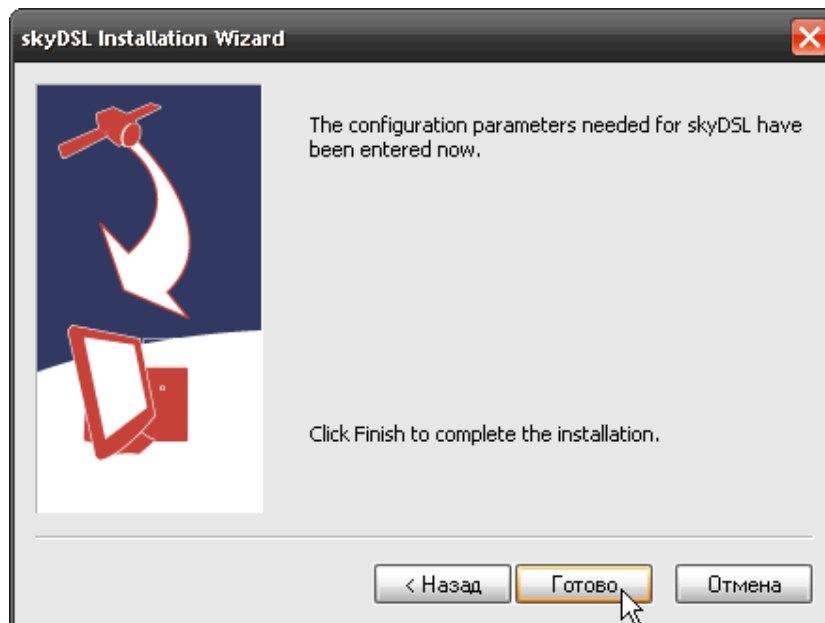
6



8. "I am already connected to the Internet" (). "I am already connected skyInternet Dial -Up (MaXiSurf)



9. "



10.

Windows.

" "

(Restart PC).

" "

(skyDSL

Connection Wizard).
skyDSL,

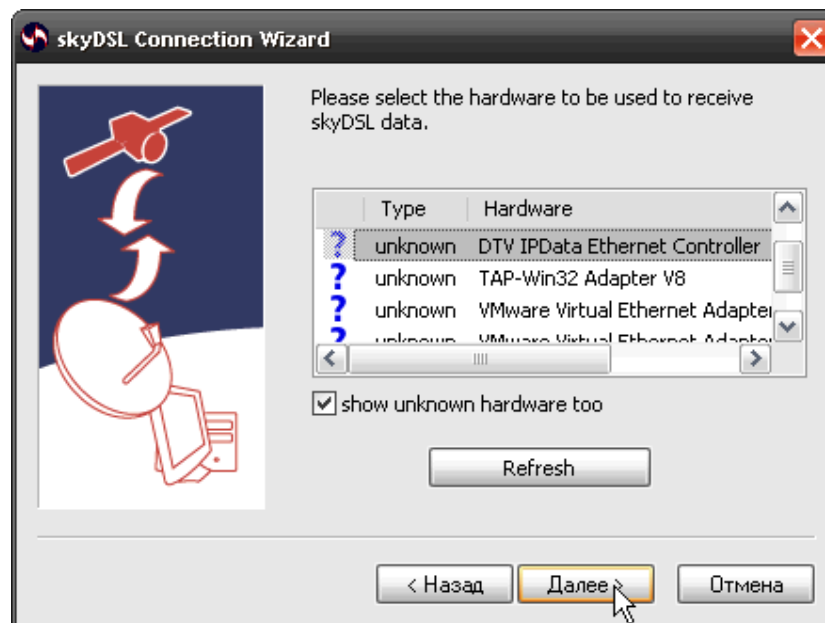
12.

DVB - ,

DVB - .

"show unknown hardware

too".



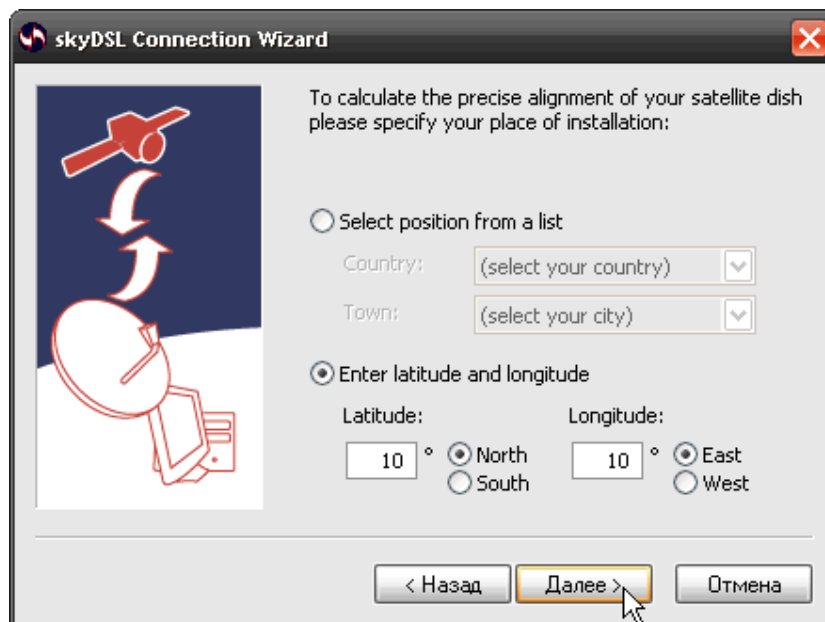
13.

Windows skyDSL skyDSL ip-

Windows.



14.



15.

skyDSL. Firewall



16.



19.

skyDSL.



20.

:



21.

skyDSL
skyDSL.

Internet Explorer
skyNumber ,

<http://service.skydsl.de/>